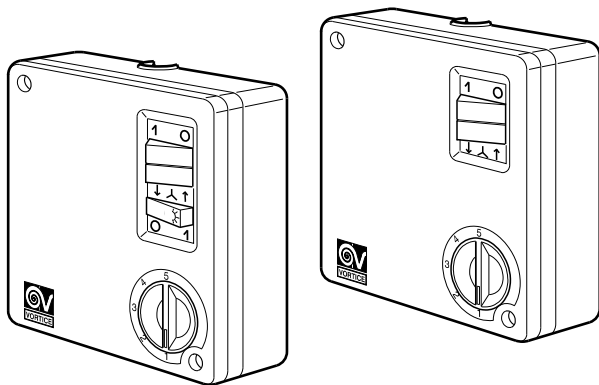


Libretto d'istruzioni  
Instruction booklet  
Notice d'emploi et d'entretien  
Betriebsanleitung  
Manual de instrucciones  
Gebruiksaanwijzing  
Instruktionsbog  
كتيب التعليمات



## SCRR5 - SCRR5L

- Gruppo comandi a 5 velocità a reversibile / con luce
- 5-position reversible speed controller / with light
- Groupe de commande réversible à 5 vitesses / avec lumière
- Steuerungseinheit mit 5 Geschwindigkeiten, umkehrbar / mit Licht
- Grupo de control con 5 velocidades reversible / con luz
- Reversibel betjeningsenhed med 5 hastigheder / med lys
- Kontr ollenhet med 5 reversibla hastigheter/med
- مجموعة التحكم ذات سرعات ٥ عكوسة / مزودة بمصباح



5-position reversible speed controller for Vortice ceiling fans with and without light  
 Transformable for flush-mounted installation with kit SCBRR5/5L/M (code 22489).

## WARNING - CAUTION



**Warning:** this symbol indicates precautions that must be taken to avoid injury

- Do not use this appliance for functions other than those described in this instruction manual.
- After removing the appliance from its packaging, ensure that it is complete and undamaged. If in doubt contact a professionally qualified electrician or contact Vortice\*. Do not leave packaging within the reach of children or infirm persons.
- Certain fundamental rules must be observed when using any electrical appliance. a) Never touch electrical appliances with wet or damp hands. b) Never touch electrical appliances when standing barefoot. c) Never allow children or infirm persons to operate appliances unsupervised.
- If you decide to disconnect it from the power supply and no longer use it, store it out of reach of children and infirm persons.
- Do not operate the appliance in the presence of inflammable vapours (alcohol, insecticides, petrol, etc.)



**Caution:** this symbol indicates precautions that must be taken to avoid damaging the appliance.

- Do not make modifications of any kind to this appliance.
- Do not expose this appliance to the weather (rain, sun, etc.).
- Periodically inspect the appliance for damage. If any faults are detected, do not operate the appliance and contact Vortice\* immediately.
- If the appliance does not operate correctly or develops a fault, contact Vortice\* immediately. Ensure that only original Vortice spares are used for repairs.
- In the event that the appliance is dropped or suffers a heavy blow, have it checked immediately by Vortice\*.
- Ensure that the appliance is installed by a professionally qualified electrician.
- Ensure that the electrical system to which the appliance is connected complies with applicable standards.
- The appliance is double insulated and therefore does not need to be earthed.
- Check that the electrical power supply/socket provides the maximum electrical power required by the appliance. If this is not the case, arrange for a professionally qualified electrician to make the necessary modifications.
- Switch off the appliance at the main switch: a) if the appliance does not operate correctly; b) before cleaning the outside of the appliance; c) if the appliance is not to be used for any length of time.

(\* Or an authorised Service Centre if you are outside the UK-Ireland territory)

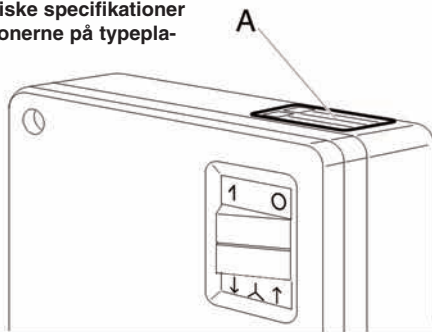
# INSTALLAZIONE

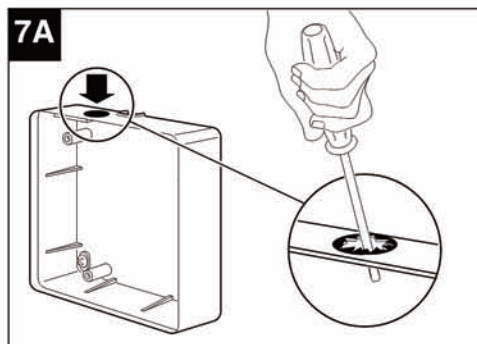
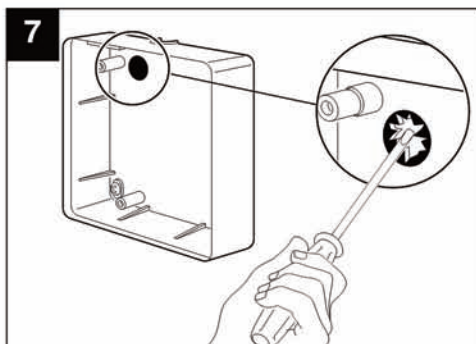
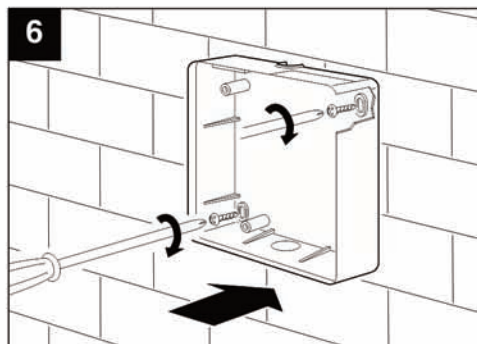
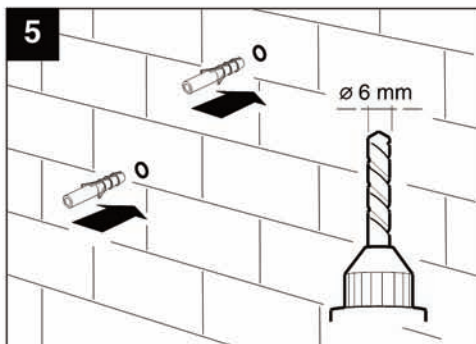
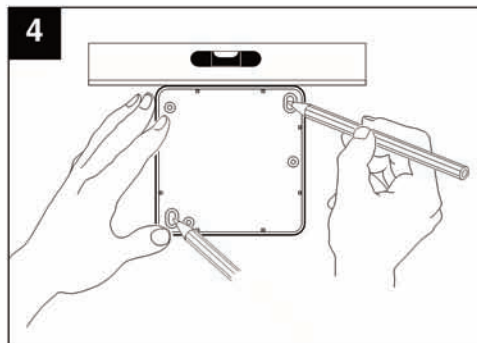
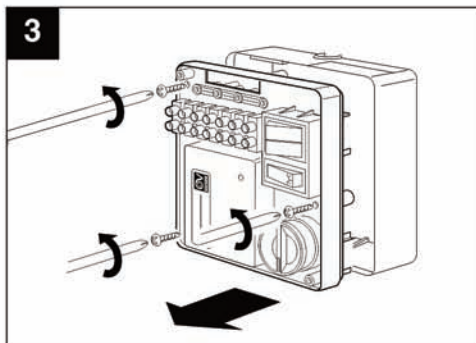
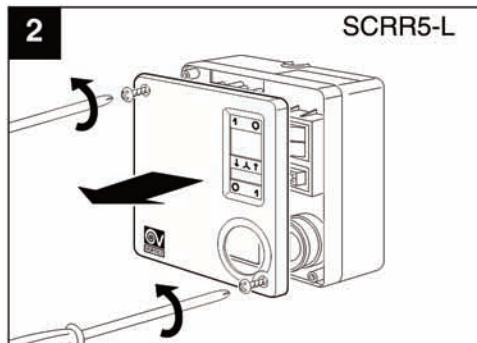
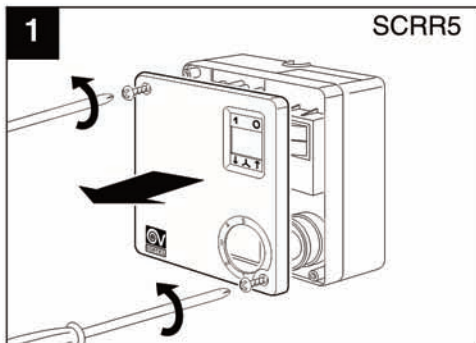
INSTALLATION  
INSTALLATION  
INSTALLATION  
INSTALACIÓN  
INSTALLATIE  
INSTALLATION

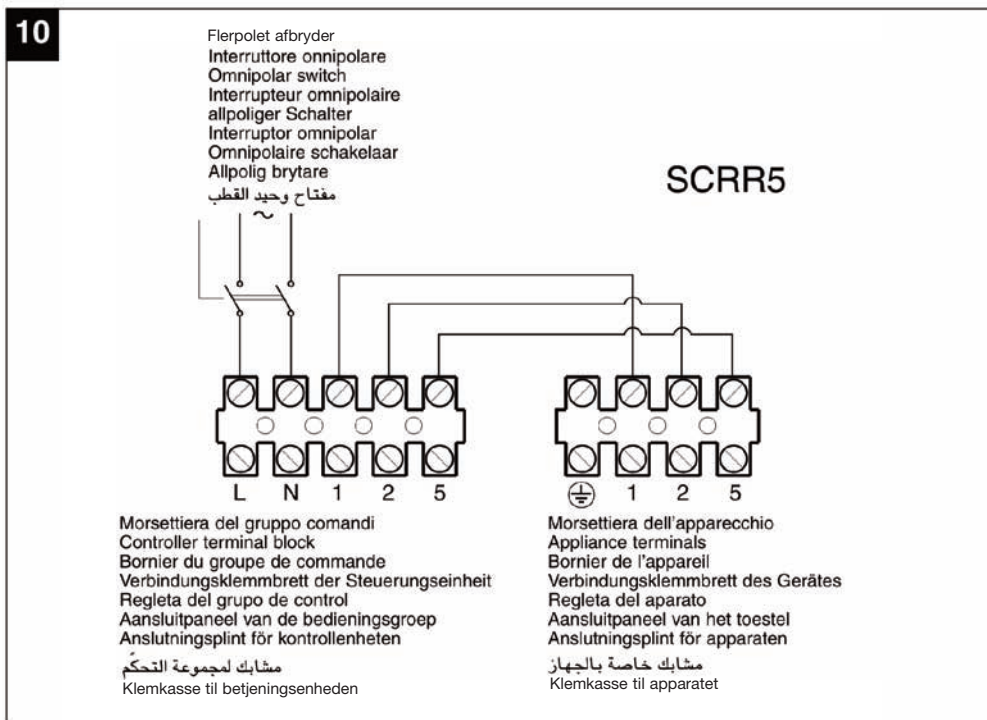
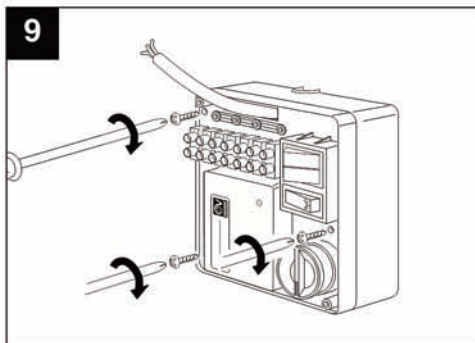
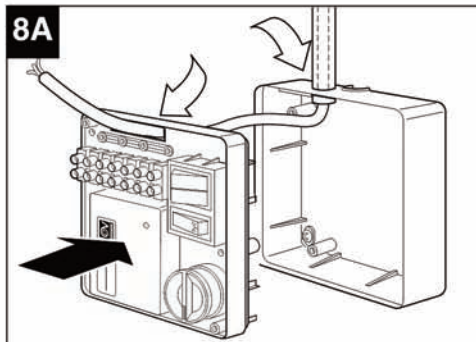
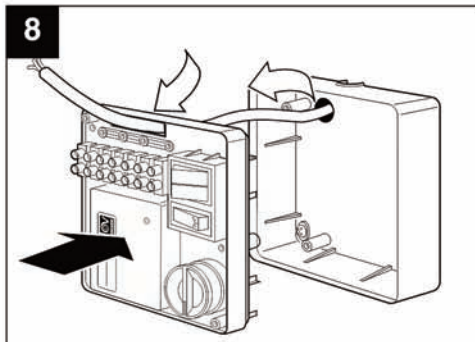
التركيب

INSTALLATION

- I dati elettrici della rete devono corrispondere a quelli riportati in targa A.
- Specifications for the power supply must correspond to the electrical data on data plate A.
- Les données électriques du réseau doivent correspondre à celles qui sont mentionnées sur la plaquette A.
- Die elektrischen Daten der Netzversorgung müssen den auf Schild A angegebenen Daten entsprechen.
- Los datos eléctricos de la red deben coincidir con los de la placa A.
- De elektrische gegevens van het lichtnet moeten overeenkomen met die van het merkplaatje A.
- Den aktuella nätspänningen skall motsvara de data som återges på apparatens märkskylt A.
- يجب أن تكون المعلومات والبيانات الكهربائية للشبكة مطابقة للبيانات على لوحة الجهاز A.
- Forsyningsnettets elektriske specifikationer skal svare til specifikationerne på typepladen A.

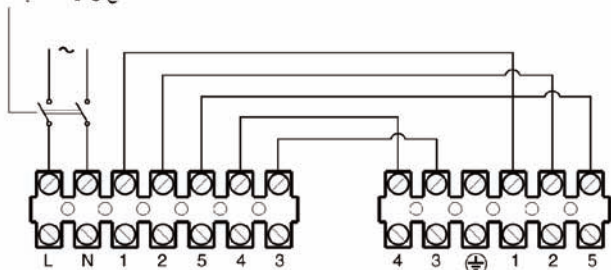






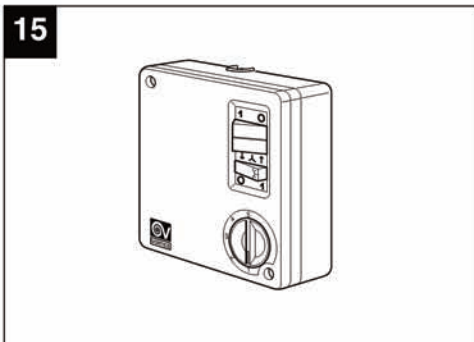
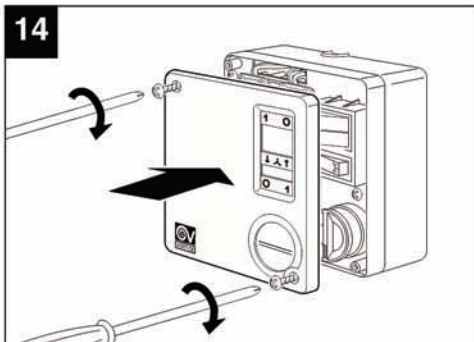
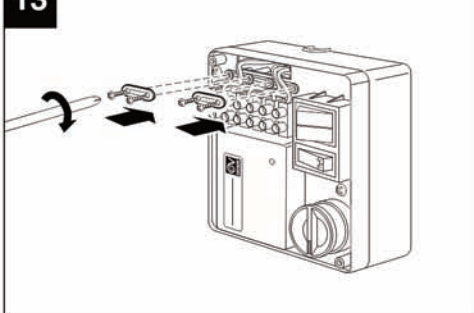
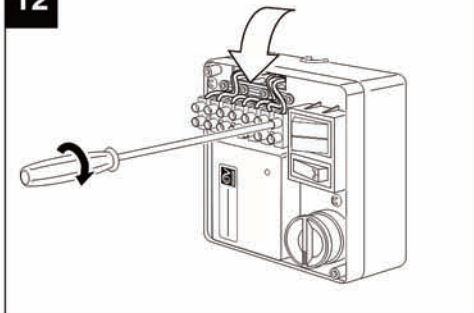
Flerpolet afbryder  
 Interruttore onnipolare  
 Omnipolar switch  
 Interrupteur omnipolaire  
 allpoliger Schalter  
 Interruptor onnipolar  
 Omnipolaire schakelaar  
 Allpolig brytare  
 مفتاح وحيد القطب

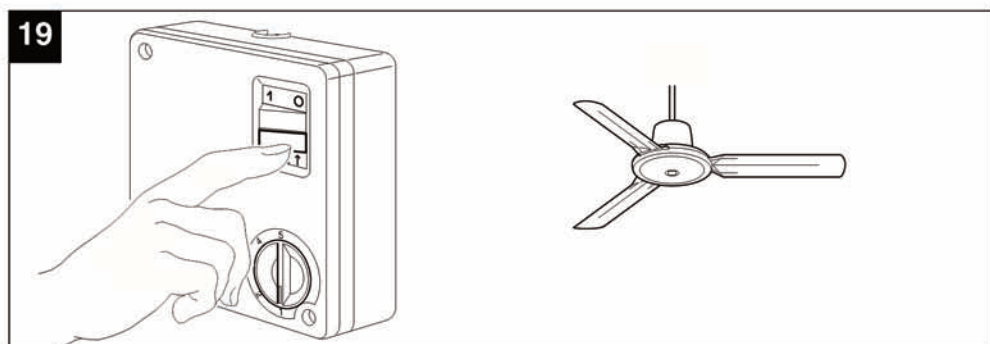
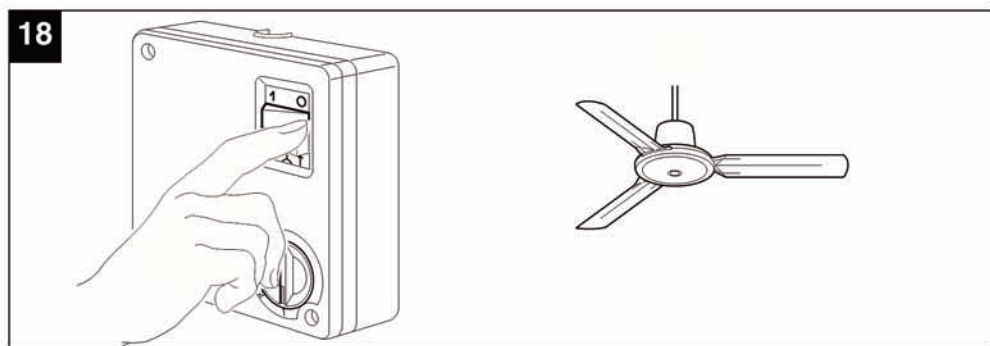
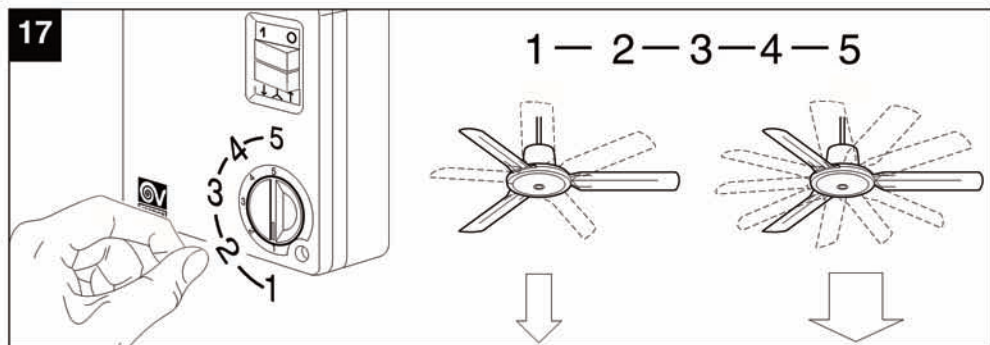
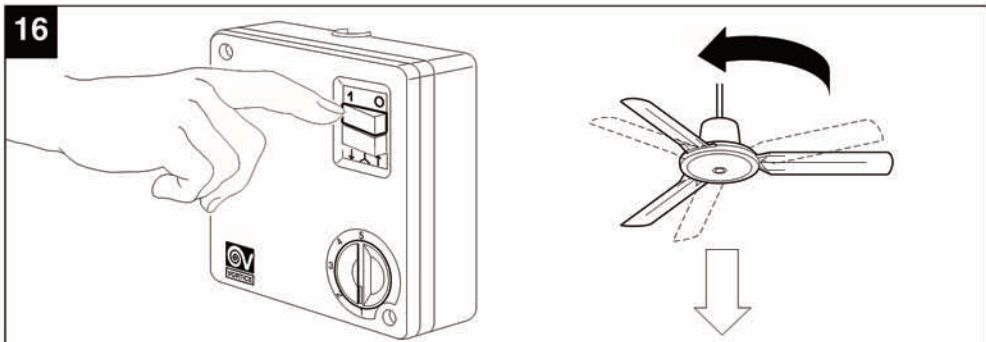
SCRR5 - L



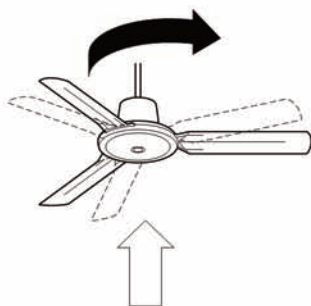
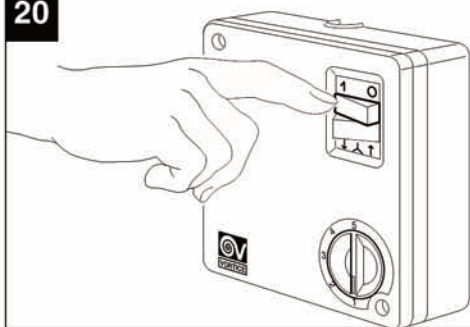
Morsetiera del gruppo comandi  
 Controller terminal block  
 Bornier du groupe de commande  
 Verbindungsklemmbrett der Steuerungs-einheit  
 Regleta del grupo de control  
 Aansluitpaneel van de bedieningsgroep  
 Anslutningsplint för kontrollenheten  
 مشابك لمجموعة التحكم  
 Klemkasse til betjeningsenheden

Morsetiera ventilatore con luce  
 Terminal block fan with light  
 Bornier ventilateur avec lumière  
 Verbindungsklemmbrett Ventilator mit Licht  
 Regleta del ventilador con luz  
 Aansluitpaneel van ventilator met licht  
 Anslutningsplint för fläkt med belysning  
 مشابك المروحة مع المصباح  
 Klemkasse til ventilator med lys

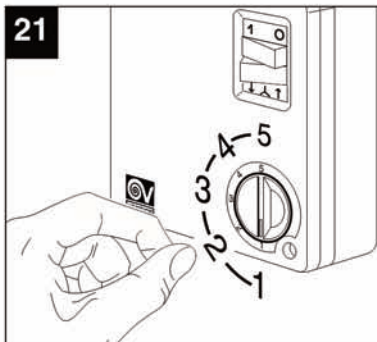




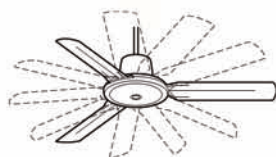
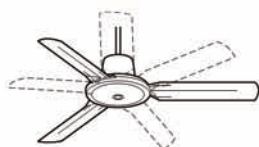
20



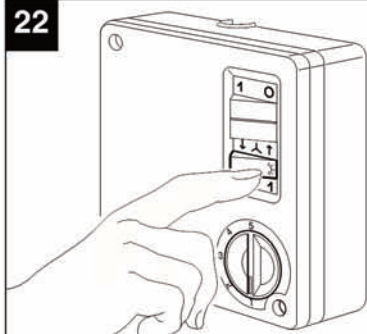
21



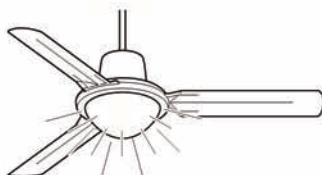
1 — 2 — 3 — 4 — 5



22



SCRR5-L





# MANUTENZIONE / PULIZIA

MAINTENANCE / CLEANING

ENTRETIEN / NETTOYAGE

WARTUNG / REINIGUNG

MANTENIMIENTO / LIMPIEZA

ONDERHOUD / REINIGING

UNDERHÅLL / RENGÖRING

الصيانة / التنظيف

VEDLIGEHØLDELSE / RENGØRING

